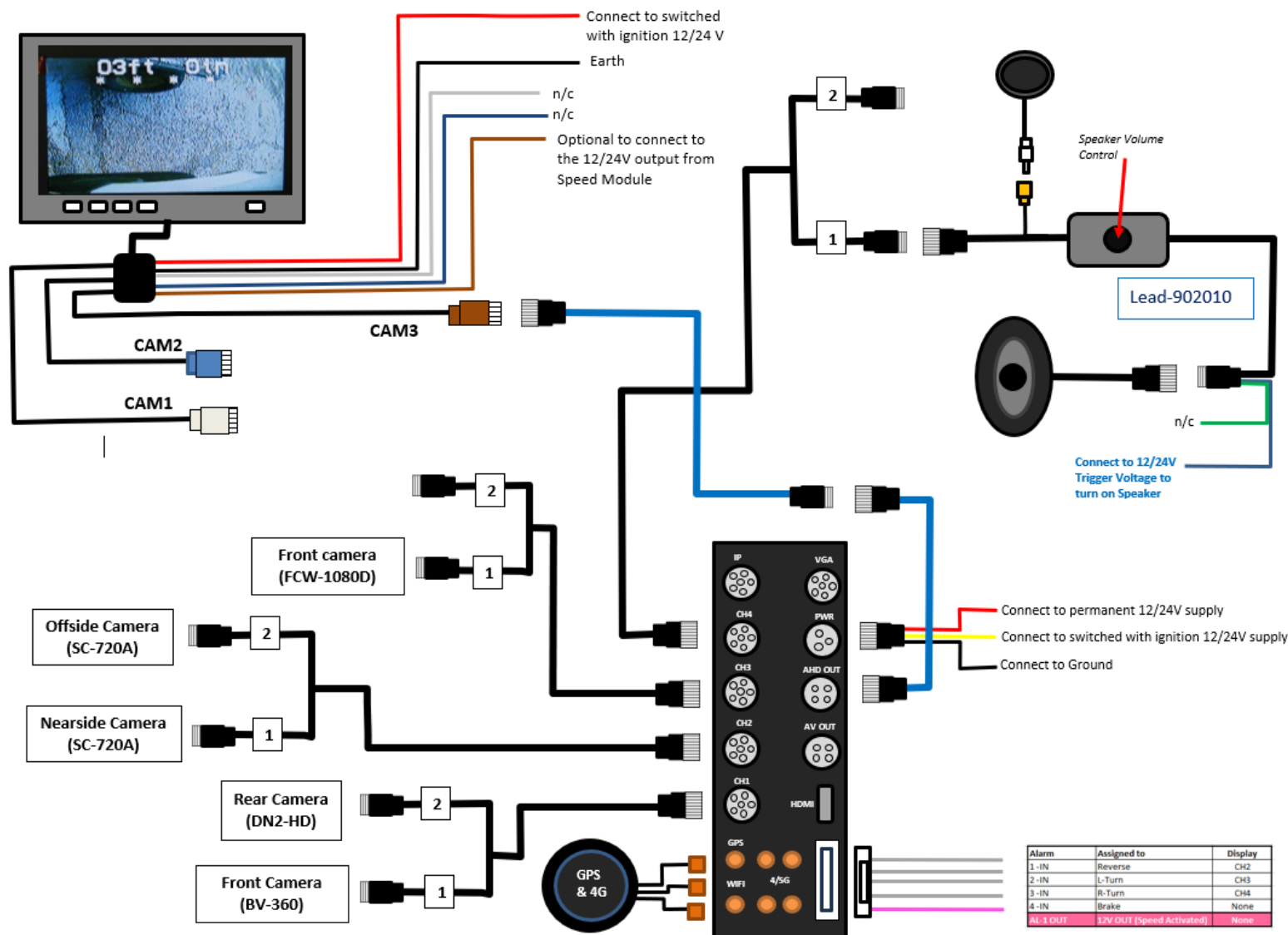


Connection Diagram FORS GOLD PSS



Connection of GPS Speed Control via Relay and Left Turn Alarm

Use 12V Relay for 12V or 24 V systems (Activation Voltage 12V)
Recommend minimum 10 Amp 12V Relay.

Note: A reliable GPS signal is required if the system is to provide the desired functionality.

Connect to the BLUE Trigger Wire on LEAD-902010 Amplifier Module

